



MORNING REPORT

Have Good Trading Day

THURSDAY



**Price is what you pay.
Value is what you get.**

- Warren Buffet



MARKET PULSE

INDIAN INDICES

NAME	CMP	NET CH.	%
SENSEX	33911.81	-98.80	-0.29
NIFTY	10490.75	-40.75	-0.39

INDIAN ADR'S

SYMBOL	CLOSE	GAIN/ LOSS %
DRREDDY	37.09	+1.51
HDFCBANK	100.28	-0.25
ICICIBK	9.64	-1.73
INFY	16.18	-0.19
TATA MOTOR	32.63	-1.06
WIPRO	5.44	-0.55

FII AND MF ACTIVITY

SYMBOL	
FIIs Eq (Provisional)	+172.32
DII's Eq (Provisional)	-206.68
FIIs Index Future	+1377.60
FIIs Index Options	+888.63
FIIs Stock Future	+87.37
FIIs Stock Options	-29.21

CURRENCY

CURERNCY	RBI RATE
RUPEE - \$	64.1577
EURO	76.2258
YEN 100	56.6800
GBP	85.8366

TOP STORY

- **Star Cement** received Rs 158.82 crore as capital investment subsidy from Central government.
- **Quess Corp** acquired Master staffing solutions and 60 percent stake in Golden Star Facilities and Service.
- **Riddhi Siddhi** board approved proposal to de-list shares of the company. Promoters set the offer floor price at Rs 510 apiece.
- SEBI asked **Axis Bank** to conduct inquiry on leak of unpublished price sensitive financial information within 3 months.
- Kolte Patil's Pune township signed Rs 193 crore agreement with **KKR**.
- **SBI** board approved raising up to Rs 8,000 crore through Tier-1 bonds by March.
- **United Bank** raised Rs 100 crore through Tier-1 bonds.

MARKET PULSE

GLOBAL INDICES

NAME	CMP	NET CH.	%
DOW	24774.30	+28.09	+0.11
NASDAQ	6939.34	+3.09	+0.04
NIKKEI	22943.00	+31.79	+0.14
HANG SENG	29777.00	+178.00	+0.60
SGX NIFTY	10523.00	+29.50	+0.29

WORLD COMMODITIES

FUTURE	CMP	%
CRUDE	59.75	+0.18
NATURAL GAS	2.745	+3.43
GOLD	1292.50	+0.09
SILVER	16.750	-0.04
COPPER	3.277	-0.12

WORLD EVENTS

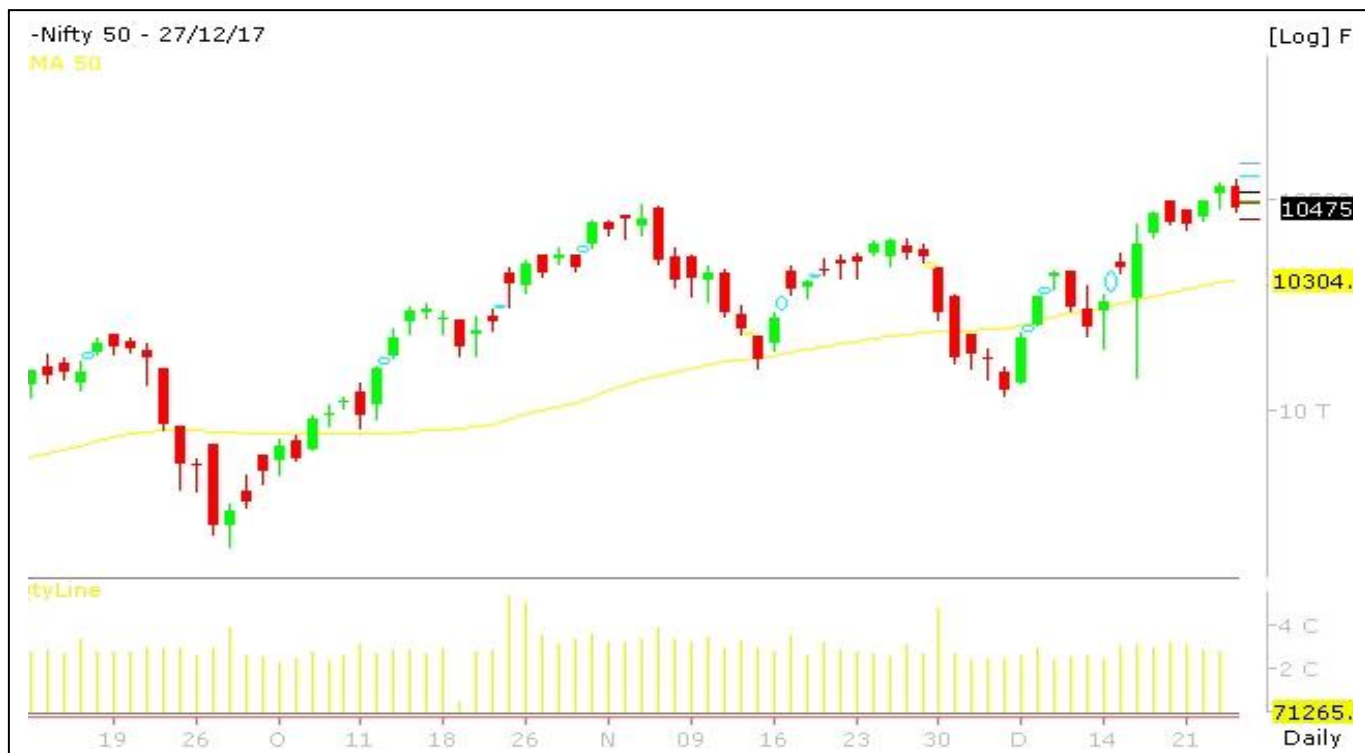
USD : Unemployment Claims
: Chicago PMI
: Crude Oil Inventories

RESULT TODAY

- EXCAST, MAPLEINF, STEELCO



NIFTY CHART



MARKET COMMENTARY

The Sensex dropped 98.80 points or 0.29% to settle at 33,911.81, its lowest closing level since 21 December 2017. The index gained 127.36 points or 0.37% at the day's high of 34,137.97, its record high. The index fell 171.10 points or 0.5% at the day's low of 33,839.51.

The Nifty fell 40.75 points or 0.39% to settle at 10,490.75, its lowest closing level since 22 December 2017. The index gained 20.90 points or 0.2% at the day's high of 10,552.40, its record high. The index fell 62.25 points or 0.59% at the day's low of 10,469.25.

Among secondary indices, the S&P BSE Mid-Cap index shed 0.19%, outperforming the Sensex. The S&P BSE Small-Cap index dropped 0.33%, underperforming the Sensex.

The breadth, indicating the overall health of the market, was negative. On the BSE, 1,539 shares fell and 1,208 shares rose. A total of 201 shares were unchanged.

Nifty likely to trade in the range of 10375-10675.

MARKET LEVELS

	PIVOT	SUPPORT LEVELS				RESISTANCE LEVELS			
NIFTY	10518	10491	10450	10423	10375	10558	10585	10626	10675
USDINR	64.107	64.043	63.966	63.903	63.875	64.184	64.248	64.325	64.401



BULK DEALS (BSE)

SCRIP	CLIENT NAME	BUY/SELL	QUANTITY	PRICE
AVONMORE	DINKAR COMMERCIALS PRIVATE LIMITED	S	200,000	47.92
BAJAJ-AUTO	NIRAV TRUST	S	1,669,750	3,351.4
INDOSOLAR	MC JAIN INFOSERVICES PVT.LTD.	B	1,847,570	8.74
BAJAJFINSV	ANANT BAJAJ TRUST	S	919,650	5,372.14
ESSARSEC	ESSAR CAPITAL LIMITED	S	200,000	9.24

BULK DEALS (NSE)

SCRIP	CLIENT NAME	BUY/SELL	QUANTITY	PRICE
JHS	SIXTH SENSE INDIA OPPORTUNITIES-I	SELL	316606	74.06
SPTL	HYPNOS FUND LIMITED	SELL	3000000	81.01
TOUCHWOOD	RAJENDRA KUMAR JAIN	SELL	33000	75.85
SAMBHAAV	VOHERA SECURITIES PVT LTD .	SELL	960000	15.51

SCRIP'S IN F&O BAN

(To resume for normal trading below 80% of market wide limit required)

- **In ban:** Balrampur Chini, DHFL, DLF, GMR Infra, HDIL, IFCL, Jet Airways, Jain Irrigation, JP Associates, Reliance Communications, Reliance Capital, TV18 Broadcast, Wockhardt
- **New in ban:** Reliance Communications, TV18 Broadcast

Initial Public Offering (IPO)

Company Name	Security type	Issue Start Date	Issue End Date	Status



NIFTY 50 STOCKS: SUPPORT & RESISTANCE

Symbol	Close	Support 1	Support 2	Pivot Point	Resistance1	Resistance2
ACC	1736	1725	1714	1736	1747	1759
ADANI PORTS	404	401	398	404	407	410
AMBUJACEM	271	269	266	271	274	277
ASIANPAINT	1149	1142	1134	1149	1157	1164
AUROPHARMA	691	682	673	692	700	710
AXISBANK	555	550	546	555	560	565
BAJAJ-AUTO	3339	3311	3283	3348	3376	3413
BANKBARODA	166	164	163	167	169	171
BHARTIARTL	535	528	521	538	545	554
BHEL	93	92	91	93	94	95
BOSCH LTD	20093	19945	19796	20147	20296	20498
BPCL	533	529	525	535	539	545
CIPLA	613	607	602	616	621	629
COALINDIA	263	261	260	263	265	267
DRREDDY	2400	2367	2333	2395	2429	2458
EICHERMOT	30191	30087	29984	30204	30307	30424
GAIL	508	505	502	510	512	517
HCLTECH	884	879	874	885	890	896
HDFC	1708	1704	1699	1709	1714	1719
HDFCBANK	1857	1849	1840	1859	1868	1879
HEROMOTOCO	3787	3751	3715	3793	3828	3870
HINDALCO	266	264	262	267	269	272
HINDUNILVR	1352	1342	1332	1353	1363	1374
ICICIBANK	313	311	308	314	316	320
IDEA	101	99	97	102	104	107
INDUSINDBK	1651	1643	1636	1657	1664	1678
INFRA TEL	368	365	362	368	371	374
INFY	1034	1028	1022	1034	1040	1045
ITC	262	261	260	263	264	265
KOTAKBANK	1014	1009	1004	1015	1021	1027
LT	1258	1247	1237	1262	1272	1286
LUPIN	875	868	862	877	884	892
M&M	747	739	732	747	755	762
MARUTI	9644	9599	9553	9675	9720	9796
NTPC	178	176	174	178	180	182
ONGC	193	191	189	193	195	198
POWERGRID	201	200	198	202	204	206
RELIANCE	924	916	908	927	935	945
SBIN	315	312	309	316	319	323
SUNPHARMA	576	552	528	567	591	606
TATAMOTORS	422	419	416	424	427	432
TATAMTRDVR	240	238	237	241	242	245
TATAPOWER	92	91	90	93	94	95
TATASTEEL	723	718	712	724	729	735
TCS	2620	2601	2582	2630	2649	2678
TECHM	503	494	486	500	509	514
ULTRACEMCO	4278	4249	4221	4294	4322	4366
VEDL	326	322	317	325	329	333
WIPRO	307	302	297	305	310	313
YESBANK	315	313	310	316	318	321
ZEEL	587	579	571	585	593	598



NSE CIRCULARS

NSE Download Ref No. : : NSE/FAOP/36591: Change in the Expiry date and Maturity date of Contracts w.e.f. Dec 28, 2017

NSE Download Ref No. : : NSE/ CML/36594: Listing of further issues of Axis Bank Limited, Coffee Day Enterprises Limited, LT Foods Limited, Future Retail Limited, Housing Development Finance Corporation Limited, ICICI Bank Limited, Intellect Design Arena Limited, JM Financial Limited, Mahindra & Mahindra Limited, Motilal Oswal Financial Services Limited, Polaris Consulting & Services Limited, Redington (India) Limited and Sona Koyo Steering Systems Limited w.e.f. Dec 28, 2017

NSE Download Ref No. : : NSE/SURV/36579: Trade for Trade - Shiva Texyarn Limited (SHIVATEX) w.e.f. Jan 09, 2018

NSE Download Ref No. : : NSE/CML/36585: Revocation of suspension of trading in units -on account of Interval Scheme-UTI Mutual Fund w.e.f. Dec 28, 2017

NSE Download Ref No. : NSE/CML/36587: Listing of units issued by Franklin Templeton Asset Management (India) Private Limited (Franklin India Fixed Maturity Plan -Series 2 Plan B). w.e.f. Dec 28, 2017





NEWS & RUMOURS:

- **Gold (Spot Dollar) major support = \$1260/\$1229 & Resistance = \$1312/\$1335.**
- **Crude oil range (WTI)->\$54 to \$64.**
- **U.S. Stocks Fluctuate as Dollar Drops, Bonds Gain: Markets Wrap:** - U.S. stocks were mixed and Treasuries rose amid trading thinned by a holiday-shortened week. The dollar weakened against most peers as investors await consumer-confidence data.
- **Dollar falls as oil price gain boosts commodity currencies:** - The U.S. dollar fell against a basket of currencies and slid against the euro on Wednesday in thin holiday trading, while a rally in commodity prices helped push the Canadian and Australian currencies to their highest levels in recent weeks. Traders said there was little news to support the euro's rise, but some investors have positioned for a possible strengthening into the new year. In 2017 the euro had its best year against the greenback since 2003.
- **Gold Prices Surge Above 3-Three Week Highs Amid Dollar Weakness:** - Gold prices rose modestly on Tuesday as buyers returned amid continued dollar weakness continued. Gold's bullish start to the week comes as data showed traders increased their bullish bets on the previous metal last week.
- **Crude Oil Prices Drop as Traders Take Profits:** - Oil prices registered moderate losses in profit-taking on Wednesday as investors pulled the plug after six consecutive days of losses and looked ahead to weekly inventory data. Prior to Wednesday's trading, the U.S. benchmark had rallied around 4.7% in the prior six days and was up about 2.4% this week alone. Despite the current moderate losses, WTI oil is still pocketing gains of about 2% so far this week.

TRENDS & OUTLOOK – DATE: 28-Dec- 2017

PRECIOUS METALS:

COMMDITY (MCX)	S2	S1	PIVOT POINT	R1	R2
GOLD (Feb)	28365	28600	28900	29130	29365
SILVER (Mar)	36500	37600	38500	39690	40599

BASE METALS

COMMDITY (MCX)	S2	S1	PIVOT POINT	R1	R2
COPPER (Feb)	451	457	464	471	476
ZINC (Dec)	203.20	206.55	209.30	213.45	216.90
LEAD (Dec)	155.40	158.20	160.50	164.70	168.55
NICKEL (Dec)	730	745	763	786	813

ENERGY

COMMDITY (MCX)	S2	S1	PIVOT POINT	R1	R2
CRUDE OIL (Jan)	3600	3711	3820	3940	4057
NATURAL GAS (Jan)	163	168	174	183	189

DATA TALKS : TODAY'S ECONOMIC DATA :

ECB Economic Bulletin, Unemployment Claims, Goods Trade Balance, Prelim Wholesale Inventories m/m, Chicago PMI, Natural Gas Storage, Crude Oil Inventories.



LET THE
WOMAN
POWER RISE

**WOMEN
DESK**

All the Ladies in the house are
cordially invited to come
& explore their trading talents.

TOLL FREE: 18001030059

SIP CALCULATOR

Calculates the
Future Value
of an
Investment



SIP Amount (Rs.)
10,000



Investment Frequency
Monthly



Expected Return (p.a.)
14.00%

Year	Principal (Rs.)	Future Value (Rs.)	Appreciation
1	120,000	128,918	8,918
2	240,000	275,884	35,884
3	360,000	443,426	83,426
4	480,000	634,423	154,423
5	600,000	852,161	252,161
10	1,200,000	2,492,923	1,292,923
15	1,800,000	5,652,071	3,852,071
20	2,400,000	11,734,741	9,334,741
25	3,000,000	23,446,403	20,446,403
30	3,600,000	45,996,206	42,396,206
35	4,200,000	89,413,927	85,213,927
40	4,800,000	173,011,040	168,211,040
45	5,400,000	333,970,140	328,570,140
50	6,000,000	643,883,137	637,883,137



Indira Securities Pvt. Ltd
Member: NSE, BSE, CDSL

Indira Commodities Pvt. Ltd.
Member: MCX, NCDEX

**Registered Office**

Indira House, 3rd Floor, 5 Topiwala Lane,
Opp. Lemington Road Police Station, Grant Road (East), Mumbai - 400007.

Corporate Office

204 Amardarshan Building 3rd floor, Saket Nagar, Indore - 452018 (M.P.)

Customer Care

Tel: +91-731-4797170/ 71/ 72/ 73/ 74 M. +91 93031 72345

Email: customercare@indiratrade.com www.indiratrade.com

**INSTITUTIONAL DEALING UNIT**

Africa House, 5, Topiwalla Lane, Lamington Road, Mumbai, 400007

Tel: +91 2230080678; Email: ie@indiratrade.com

Disclaimer

This report is for private circulation within the Indira Group. This report is strictly confidential and for information of the selected recipient only and may not be altered in any way, transmitted to, copied or distributed, in part or in whole, to any other person or to the media or reproduced in any form. This report should not be construed as an offer or solicitation to buy or sell any securities or any interest in securities. It does not constitute a personal recommendation or take into account the particular investment objectives, financial situations, or any such factor. The information, opinions estimates and forecasts contained here have been obtained from, or are based upon, sources we believe to be reliable, but no representation of warranty, express or implied, is made by us to their accuracy or completeness. Opinions expressed are our current opinions as of the date appearing on this material only and are subject to change without notice.